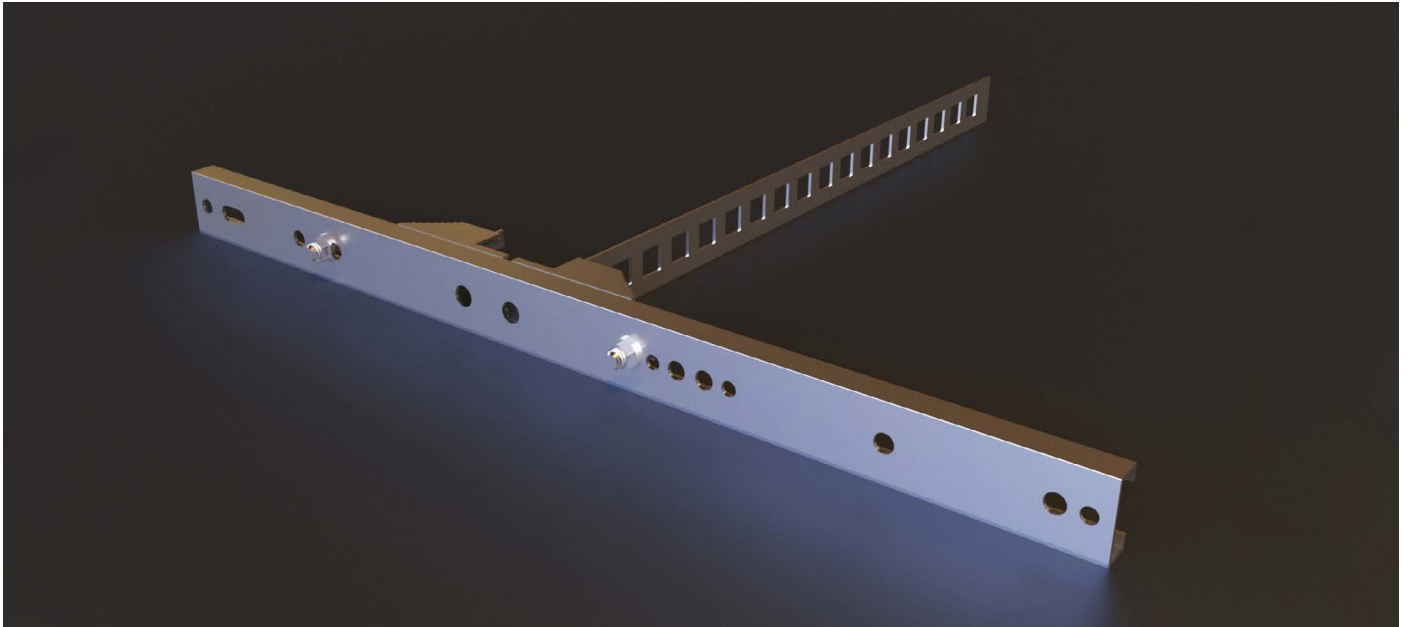


MECHANICAL MOUNTING OPTIONS



SATEVIS-GTW-SOLAR-MAST

Pole Clamp, for reliable, convenient fastening to round or square poles.

- For pole diameter: Ø from 40 to 170 mm
- For pole size: from 50 to 150 m
- Material Profile rails, clamping section: Carbon steel
- Clamping strap: Stainless steel 1.4301 (AISI 304)
- 2 profile rails, 600 mm long
- 4 clamping sections
- 2 clamping straps
- 4 clamping brackets
- 4 self-threading M10 screws for mounting on the enclosure
- Gross Weight: 2kg